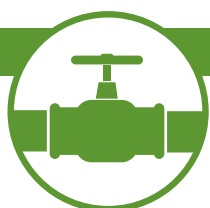


PROSHARES DJ BROOKFIELD GLOBAL INFRASTRUCTURE ETF (TOLZ)

The only ETF focused exclusively on pure-play infrastructure assets

Take a closer look at pure-play infrastructure companies

Pure-play infrastructure companies are the owners and operators of infrastructure assets, such as toll roads, airports, pipelines and communication towers. With their near monopolistic positions, continual demand and limited sensitivity to economic cyclicalities, these companies, as a group, have had stable, predictable cash flows, attractive yields and may be poised to benefit from increasing global infrastructure spending. What are some of these companies, and what kind of services do they provide? Let's take a look.



Oil & Gas Storage & Transportation

Cheniere Energy, Inc. (Ticker: LNG) | Headquarters: Houston, TX

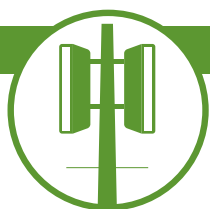
- International energy company that is the leading producer of liquefied natural gas (LNG) in the United States.
- Became the first company in February 2016 to ship LNG from a commercial facility in the contiguous United States.
- Approximately 85 percent of its expected aggregate LNG production capacity is contracted through long-term agreements with 20 investment-grade customers throughout the world.



Toll Roads and Related Facilities

Transurban (Ticker: TCL-AU) | Headquarters: Melbourne, Australia

- Leading owner and operator of toll roads, operating 21 toll roads in Australia and North America.
- Is expanding internationally with 50% stake in I-95 and I-495 Express Lanes in the Washington, DC area and 100% equity interest in Montreal-area's A25, to be held until 2042.



Communications Tower Real Estate

American Tower Corporation (Ticker: AMT) | Headquarters: Boston, MA

- Leading independent owner, operator and developer of multi-tenant communication towers, which is poised to potentially benefit from rapidly increasing wireless data usage, including 5G.
- Holds approximately 222,000 communication sites in the U.S. and internationally that produce long-term and recurring revenue streams.



Water

American Water Works (Ticker: AWK) | Headquarters: Camden, NJ

- Founded in 1886, it is the largest and most geographically diverse publicly traded U.S. water and wastewater utility company.
- It supplies drinking water, wastewater and other related services to an estimated 14 million people in 24 states.

The index gives broad exposure to companies spanning categories that include:



TRANSPORTATION

Airports, toll roads, ports



ENERGY

Electricity transmission, oil and gas storage



COMMUNICATIONS

Cell phone towers, satellites



WATER

Treatment facilities and systems

About TOLZ and the Dow Jones Brookfield Global Infrastructure Composite Index

The ProShares DJ Brookfield Global Infrastructure ETF (Ticker: TOLZ) is the only ETF focused on “pure play” infrastructure companies. Unlike other infrastructure strategies, it does not include construction, consulting or other auxiliary firms. TOLZ follows the Dow Jones Brookfield Global Infrastructure Composite Index. The index consists of companies domiciled globally whose primary business is the ownership and operation of infrastructure assets.

Dow Jones Brookfield Global Infrastructure Composite Index Holdings As of June 30, 2022

Name	Weight	Country of Domicile	Category Weight
ENBRIDGE INC.	7.03%	Canada	Oil & Gas Storage & Transportation 37.27%
TC ENERGY CORP.	4.17%	Canada	
SEMPRA	3.38%	United States	
THE WILLIAMS COMPANIES INC.	2.56%	United States	
KINDER MORGAN INC.	2.32%	United States	
CHENIERE ENERGY INC.	2.06%	United States	
ONEOK INC.	1.98%	United States	
PEMBINA PIPELINE CORP.	1.56%	Canada	
TARGA RESOURCES CORP.	1.09%	United States	
ATMOS ENERGY CORP.	1.02%	United States	
HONG KONG AND CHINA GAS CO. LTD.	0.99%	Hong Kong	
SNAM SPA	0.90%	Italy	
ENN ENERGY HOLDINGS LTD.	0.86%	Hong Kong	
NISOURCE INC.	0.79%	United States	
NATURGY ENERGY GROUP SA	0.75%	Spain	
APA GROUP	0.71%	Australia	
TOKYO GAS CO.	0.57%	Japan	
KEYERA CORP.	0.42%	Canada	
ENAGAS SA	0.42%	Spain	
SOUTHWEST GAS HOLDINGS, INC.	0.32%	United States	
ONE GAS INC.	0.30%	United States	
CHINA RESOURCES GAS GROUP LTD.	0.29%	China	
NEW JERSEY RESOURCES CORP.	0.28%	United States	
KUNLUN ENERGY CO. LTD.	0.26%	China	
ITALGAS SPA	0.24%	Italy	
CHINA GAS HOLDINGS LTD.	0.24%	China	
SPIRE INC	0.23%	United States	
ANTERO MIDSTREAM CORP.	0.22%	United States	
GIBSON ENERGY INC.	0.22%	Canada	
BROOKFIELD INFRASTRUCTURE PARTNERS CORP.	0.20%	Canada	
TOHO GAS CO.	0.17%	Japan	
VOPAK NV	0.16%	Netherlands	
ENLINK MIDSTREAM LLC	0.16%	United States	
CHESAPEAKE UTILITIES CORP.	0.15%	United States	
BEIJING ENTERPRISES HOLDINGS LTD.	0.11%	China	
NORTHWEST NATURAL HOLDING CO.	0.10%	United States	
TOWNGAS SMART ENERGY CO. LTD.	0.04%	Hong Kong	
NATIONAL GRID PLC	4.51%	Britain (United Kingdom)	Electricity Transmission & Distribution 15.95%
CONSOLIDATED EDISON INC.	2.11%	United States	
EVERSOURCE ENERGY	1.91%	United States	
FORTIS INC.	1.77%	Canada	
EDISON INTL	1.68%	United States	
PG&E CORP.	1.13%	United States	
TERNA SPA	0.92%	Italy	
RED ELECTRICA CORP. SA	0.68%	Spain	
HYDRO ONE LIMITED	0.62%	Canada	
ELIA GROUP	0.39%	Belgium	
NORTHWESTERN CORP.	0.21%	United States	
FJORDKRAFT HOLDING ASA	0.03%	Norway	

Name	Weight	Country of Domicile	Category Weight
ENTERPRISE PRODUCTS PARTNERS LP	2.41%	United States	Master Limited Partnerships (MLP) 8.01%
ENERGY TRANSFER LP	1.69%	United States	
MPLX LP	0.79%	United States	
BROOKFIELD INFRASTRUCTURE PARTNERS LP	0.75%	Canada	
MAGELLAN MIDSTREAM PARTNERS	0.66%	United States	
PLAINS ALL AMERICAN PIPELINE LP	0.31%	United States	
WESTERN MIDSTREAM PARTNERS, LP	0.31%	United States	
DCP MIDSTREAM, LP	0.19%	United States	
CHENIERE ENERGY PARTNERS LP	0.17%	United States	
PLAINS GP HOLDINGS LP	0.14%	United States	
CRESTWOOD EQUITY PARTNERS LP	0.13%	United States	
SHELL MIDSTREAM PARTNERS LP	0.11%	United States	
NUSTAR ENERGY LP	0.09%	United States	
GENESIS ENERGY LP	0.08%	United States	
HESS MIDSTREAM LP	0.06%	United States	
BP MIDSTREAM PARTNERS LP	0.05%	United States	
HOLLY ENERGY PARTNERS LP	0.05%	United States	
AMERICAN TOWER CORP.	7.21%	United States	Communications 18.11%
CROWN CASTLE INTL CORP.	5.03%	United States	
SBA COMMUNICATIONS CORP.	2.36%	United States	
CELLNEX TELECOM S.A.	2.09%	Spain	
CHINA TOWER CORP. LTD. - H SHARES	0.37%	China	
INWIT - INFRASTRUTTURA WIRELESS SPA	0.30%	Italy	
SES	0.27%	Luxembourg	
VANTAGE TOWERS AG	0.26%	Germany	
EUTELSAT COMMUNICATIONS PROMESSES	0.14%	France	
HELIOS TOWERS PLC	0.05%	Britain (United Kingdom)	
RAI WAY SPA	0.05%	Italy	
TRANSURBAN GROUP NPV	2.35%	Australia	Toll Roads 4.39%
ATLANTIA SPA	0.80%	Italy	
GETLINK SE	0.60%	France	
ATLAS ARTERIA	0.36%	Australia	
JIANGSU EXPRESSWAY CO. LTD. - H SHARES	0.10%	China	
ZHEJIANG EXPRESSWAY CO. LTD. - H SHARES	0.09%	China	
SHENZHEN EXPRESSWAY CO. LTD. - H SHARES	0.06%	China	
YUEXIU TRANSPORT INFRASTRUCTURE LTD.	0.05%	China	
AMERICAN WATER WORKS CO. INC.	1.89%	United States	Water 5.42%
SEVERN TRENT	0.77%	Britain (United Kingdom)	
UNITED UTILITIES GROUP PLC	0.76%	Britain (United Kingdom)	
ESSENTIAL UTILITIES INC.	0.74%	United States	
PENNON GROUP	0.29%	Britain (United Kingdom)	
CIA DE SANEAMENTO BASICO ES DE S PAULO ADR	0.25%	Brazil	
AMERICAN STATES WATER CO.	0.21%	United States	
CALIFORNIA WATER SERVICES GROUP	0.20%	United States	
SJW GROUP	0.12%	United States	
BEIJING ENTERPRISES WATER GROUP LTD.	0.11%	China	
CHINA WATER AFFAIRS GROUP LTD.	0.07%	China	
AENA SA	0.93%	Spain	Airports 3.46%
AUCKLAND INTL AIRPORT LTD.	0.50%	New Zealand	
GRUPO AEROPORTUARIO DEL PACIFICO, S.A.B. DE C.V. ADR	0.42%	Mexico	
GRUPO AEROPORTUARIO DEL SURESTE S.A.B. DE C.V. ADR	0.33%	Mexico	
JAPAN AIRPORT TERMINAL CO.	0.32%	Japan	
ADP PROMESSES	0.29%	France	
FLUGHAFEN ZURICH AG	0.26%	Switzerland	
FRAPORT AG	0.16%	Germany	
GRUPO AEROPORTUARIO CEN -ADR	0.15%	Mexico	
BEIJING CAPITAL INTERNATIONAL AIRPORT CO. LTD. - H SHARES	0.07%	China	
HAINAN MEILAN INTERNATIONAL AIRPORT CO. LTD. - H SHARES	0.02%	China	
VINCI	4.02%	France	Diversified 6.91%
CENTERPOINT ENERGY INC.	1.21%	United States	
FERROVIAL SA	1.01%	Spain	
HICL INFRASTRUCTURE CO. LTD.	0.34%	Britain (United Kingdom)	
3I INFRASTRUCTURE PLC	0.22%	Britain (United Kingdom)	
ACEA SPA	0.06%	Italy	
UNITIL CORP.	0.05%	United States	
CHINA MERCHANTS PORT HOLDINGS CO. LTD.	0.19%	China	Ports 0.49%
COSCO SHIPPING PORTS LTD.	0.10%	China	
HUTCHISON PORT HOLDINGS TRUST	0.09%	Singapore	
WESTSHORE TERMINALS INVESTMENT CORP.	0.08%	Canada	
HAMBURGER HAFEN UND LOGISTIK AG	0.03%	Germany	

Get more
information about
TOLZ:

Visit [ProShares.com](https://proshares.com) for
complete fund information,
current holdings and more.

Index constituents as of 6/30/2022;
subject to change. Past performance
does not guarantee future results.

LEARN ABOUT PROSHARES

ProShares has been at the forefront of the ETF revolution since 2006. ProShares now offers one of the largest lineups of ETFs, with more than \$55 billion in assets. The company is the leader in strategies such as dividend growth, interest rate hedged bond and geared (leveraged and inverse) ETF investing. ProShares continues to innovate with products that provide strategic and tactical opportunities for investors to manage risk and enhance returns.

Sources: ProShares; Cheniere.com, 2022; Transurban.com, 2022; Americantower.com, 2022; Amwater.com, February 2022.

Any forward-looking statements herein are based on expectations of ProShares at this time. Whether or not actual results and developments will conform to ProShares' expectations and predictions, however, is subject to a number of risks and uncertainties, including general economic, market and business conditions, changes in laws or regulations or other actions made by governmental authorities or regulatory bodies, and other world economic and political developments. ProShares undertakes no duty to update or revise any forward-looking statements, whether as a result of new information, future events or otherwise.

Investing involves risk, including the possible loss of principal. This ProShares ETF is diversified and entails certain risks, including imperfect benchmark correlation and market price variance, that may decrease performance. This ETF is subject to risks faced by companies in the infrastructure, energy and utilities industries to the same extent as the Dow Jones Brookfield Global Infrastructure Composite Index is so concentrated. This ETF invests in master limited partnerships (MLPs). Investments in MLPs expose the ETF to certain tax risks associated with investing in partnerships. Changes in U.S. tax laws could revoke the pass-through attributes that provide the tax efficiencies that make MLPs attractive investment structures. MLPs may also have limited financial resources, may be relatively illiquid, and may be subject to more erratic price movements because of the underlying assets they hold. In addition, a portion of the ETF's distributions may be a return of capital, which constitutes the return of a portion of a shareholder's original investment. Under tax rules, returns of capital are generally not currently taxable, but lower a shareholder's tax basis in their shares. Such a reduction in tax basis will result in larger taxable gains and/or lower tax losses on a subsequent sale of shares. International investments may involve risks from: geographic concentration, differences in valuation and valuation times, unfavorable fluctuations in currency, differences in generally accepted accounting principles, and from economic or political instability. In emerging markets, many risks are heightened, and lower trading volumes may occur. For more on these and other risks, please read the prospectus **There is no guarantee any ProShares ETF will achieve its investment objective.**

Carefully consider the investment objectives, risks, charges and expenses of ProShares before investing. This and other information can be found in their summary and full prospectuses. Read them carefully before investing. Obtain them from your financial professional or broker dealer representative or visit ProShares.com.

The "Dow Jones Brookfield Global Infrastructure Composite" Index is a product of S&P Dow Jones Indices LLC and its affiliates and has been licensed for use by ProShares. "S&P" is a registered trademark of Standard & Poor's Financial Services LLC ("S&P") and "Dow Jones" is a registered trademark of Dow Jones Trademark Holdings LLC ("Dow Jones") and have been licensed for use by S&P Dow Jones Indices LLC and its affiliates. ProShares have not been passed on by S&P Dow Jones Indices LLC and its affiliates as to their legality or suitability. ProShares based on the Dow Jones Brookfield Global Infrastructure Composite Index are not sponsored, endorsed, sold or promoted by S&P Dow Jones Indices LLC, Dow Jones, S&P or their respective affiliates, and they make no representation regarding the advisability of investing in ProShares. **THESE ENTITIES AND THEIR AFFILIATES MAKE NO WARRANTIES AND BEAR NO LIABILITY WITH RESPECT TO PROSHARES.**

ProShares are distributed by SEI Investments Distribution Co., which is not affiliated with the fund's advisor.

©2022 PSA BR-2020-6287